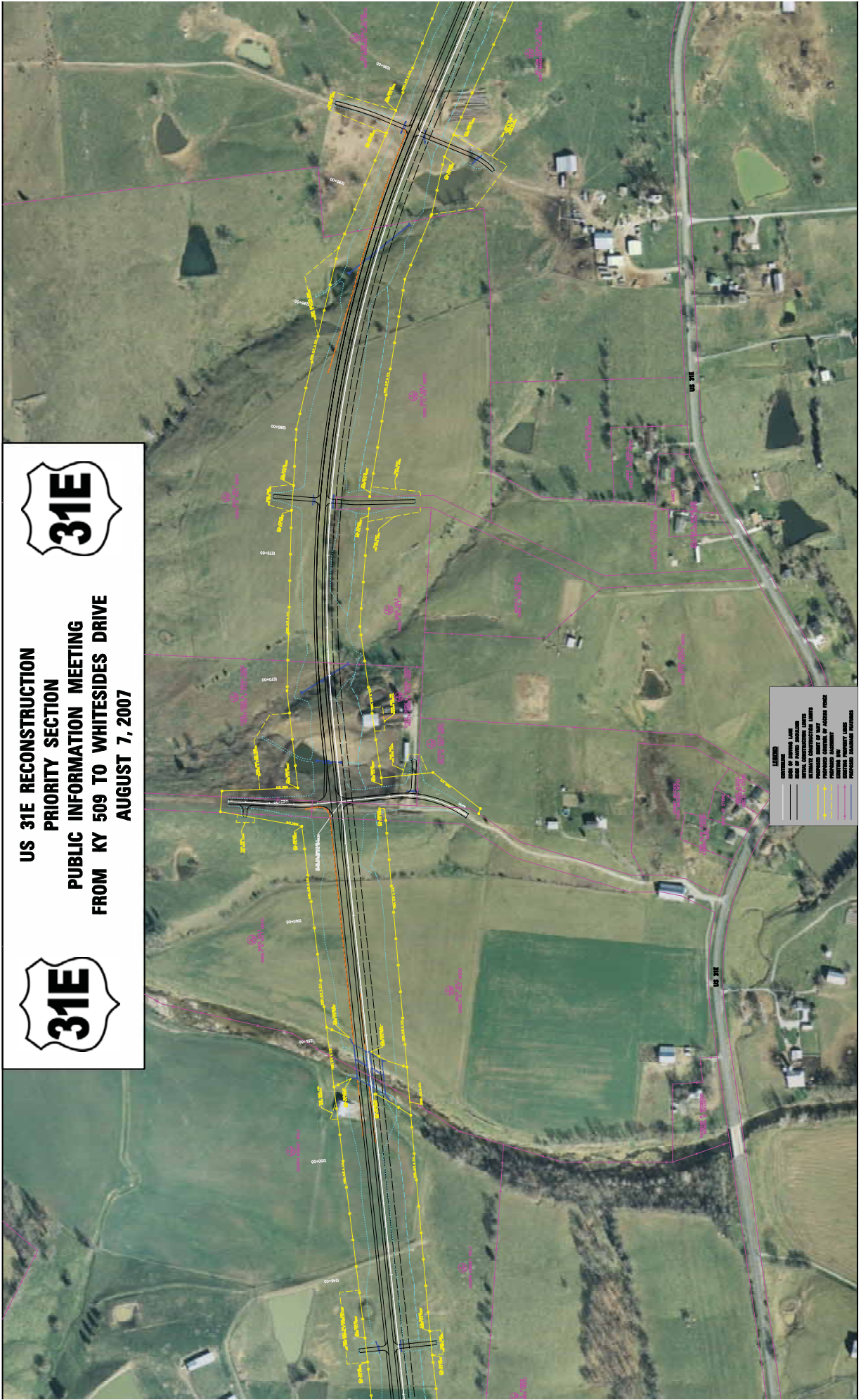


**US 31E RECONSTRUCTION
 PRIORITY SECTION
 PUBLIC INFORMATION MEETING
 FROM KY 509 TO WHITESIDES DRIVE
 AUGUST 7, 2007**



LEGEND

- PROPOSED CENTERLINE
- PROPOSED RIGHT-OF-WAY LINE
- PROPOSED CONSTRUCTION LIMITS
- PROPOSED EASEMENTS
- PROPOSED DRAINAGE
- PROPOSED CURB & GUTTER
- PROPOSED SIDEWALK
- PROPOSED DRIVEWAY
- PROPOSED DRIVEWAY